

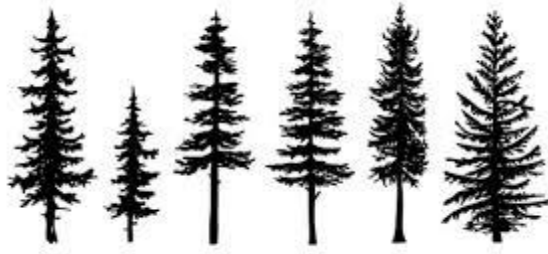


City of Osseo, Wisconsin

OUTDOOR RECREATION PLAN



2024 - 2029



City of Osseo Outdoor Recreation Plan

Prepared by:

Mississippi River Regional Planning Commission
1707 Main Street, Suite 435
La Crosse, WI 54601
Telephone: 608.785.9391



in collaboration with the Citizens of Osseo and:

Josh Pettis
Mayor, City of Osseo

Lora Wathke
Citizen Representative

Naomi Bodway
Citizen Representative



Table of Contents

Introduction	1
Outdoor Recreation in the City of Osseo	1
Goals and Objectives	2
Description of Planning Area	4
Overview.....	4
Land Use and Natural Resources	5
Favorite Places to Visit Based on Public Input.....	6
Definitions	7
Recreation Standards.....	8
Property Inventory.....	9
Online Map of Rec Facilities	9
Stoddard Park.....	10
Stoddard Park Softball Field.....	12
Osseo Municipal Swimming Pool in Stoddard Park.....	13
Osseo Junior Baseball & Softball Park (Osseo Little League Parks).....	14
Central Park	15
Lions Park.....	16
Other Recreational Facilities	16
School Recreation Facilities and Areas.....	17
Ward Field / High School	17
Osseo Golf Club	18
Lake Martha	18
Merchant Park / Baseball Field	19
State Outdoor Recreation Facilities	20
Buffalo River State Trail	20
Buffalo River Fishery Area	21
Buffalo River Trail Prairies	21
Planning Process	22
Local Priorities and Objectives	22

Implementation.....	23
Osseo’s Priorities, Objectives and Action Items for 2024-2029	23
Individual Park Projects	24
Survey and Public Input for Future Projects.....	25
Our Partners	25
Survey Results Summary	26
State Review of Recreation Demand.....	28
Summary of Previous Outdoor Recreation and Other Plans.....	30
APPENDIX A	31
Grant/Funding Opportunities	31
Wisconsin Department of Natural Resources	31
Rural Development Administration (USDA - Rural Development)	31
Transportation Assistance Program (TAP) Wisconsin DOT	32
Community Development Block Grant, Department of Administration	32
Grant Finder	32
Appendix B Demographics.....	33
Social Characteristics and Demographics.....	33
Household Income	35
Housing and Education.....	36
Appendix C: Maps	37
Recreation Facilities	37
Soil Types	38
Buffalo River State Trail	39
Arterials in Osseo	40
Snowmobile Trails in Osseo	41
Topography of Osseo.....	42
Appendix D: Survey Results	43
Appendix E: Adoption Resolution.....	44



Introduction

Outdoor Recreation in the City of Osseo

The City of Osseo recognizes the need for a comprehensive outdoor recreation plan. Concerned citizens are also aware of the need for local outdoor recreation facilities and are also aware that the needs vary within Osseo and will change with time. This plan is intended to serve as a guide to Osseo in the development of specific recreation programs and long-range objectives. The plan is also intended to assist in budgetary considerations when planning for the maintenance and further development of recreation facilities. The recommendations and proposals found within this plan are aimed at the continued preservation, acquisition, development, and improvements of Osseo's outdoor recreation facilities. It is Osseo's responsibility to periodically further investigate and seriously consider the recommendations cited within this plan that provide for the orderly growth, development, and maintenance of Osseo's outdoor recreation resources.

This plan is also intended to assure Osseo's eligibility to participate in the Federal Land and Water Conservation Fund Program (LWCF), Aids for the Acquisition and Development of Local Parks (ADLP), Urban Green Space Program (UGS), and Urban Rivers Grant Program (URGP). The existence of a recreation plan will also assist the City with its overall planning and development efforts for which financial assistance is also available from other federal and state programs designed to assist in the development of viable communities. The provision of adequate recreation facilities is a goal that concurs with the national emphasis on improving the quality of life in our communities and preserving a balanced environment.



Goals and Objectives

- **The City of Osseo is committed to working with our schools, businesses, volunteer organizations and other units of government to provide accessible, engaging, affordable and high-quality outdoor recreational opportunities, events, programs, and facilities.**
 - Using the available facilities and working with our partners we will cooperate with existing community organizations in offering programs and sports like baseball, football, pickleball, basketball, golf, swimming lessons, and other organized activities for all ages.
 - Osseo will offer special events like concerts, festivals, markets, tournaments, and other outdoor activities.
 - Our parks, playgrounds, courts, trails, and public spaces will also be available for unprogrammed leisure activities year-round.
 - As the Osseo community grows and evolves, we will focus on using our outdoor plan as a way to connect and enhance the sense of community and overall health in our area.
- **The Osseo Community will facilitate access to the outdoors and recreational opportunities for both citizens and visitors to the area.**
 - The City of Osseo by working with its partners will develop and maintain a robust Park and Trail System with Athletic Fields and sports courts available to our citizens, visitors, and pets.
 - Publicizing Osseo's outdoor amenities, the public pool, golf course and access to our lakes and rivers will further enhance the outdoor experience for both residents and visitors.
 - In Osseo's planning, we will be cognizant of the positive economic development impact of available outdoor activities and continue to grow this aspect of our community for our citizens and those visitors these types of facilities and events bring to town.



City of Osseo Outdoor Rec Plan 2024 - 2029

- **Osseo is committed to maintaining, improving, and expanding outdoor facilities.**
 - We will commit to maintaining our existing parks, playgrounds, and equipment.
 - In addition, we will seek to improve these systems and our trails, ADA accessibility, and public access to area lakes and rivers.
- **Osseo will focus on establishing and enhancing communication regarding our facilities, events, and programming using both technology and all available media outlets.**
 - We will maintain and improve our website, email, and presence on social media. Our objective is to use technology to improve our awareness in the community.
 - We also understand that for a section of our community more traditional methods of communication work best and will also use more traditional communication methods like news outlets, mail, posters, and direct contact.
- **Osseo will prioritize health and wellness and environmental impact when making outdoor recreational decisions.**
 - We understand that exercise in any form is good for our youth, seniors, and people of all ages and abilities. We will continue to promote the benefits of all outdoor activities. We will enhance those spaces with easy and convenient options for active movement.
 - To maintain a healthy outdoor space, we need to care for and improve our trees and canopy, green spaces, and trails. In addition, we need to keep our waterways free of pollution while maintaining our shorelines, better dams and spillways, and public access.
- **Osseo will work with community members to seek input and priorities on projects while seeking funding and partnerships to minimize financial impact on our taxpayers.**
 - We will be fiscally responsible implementing this plan by seeking grants and other funding opportunities, public-private partnerships, intergovernmental cooperations, and other revenue sources.
 - We will continue to seek input from our communities as we move forward.



Description of Planning Area

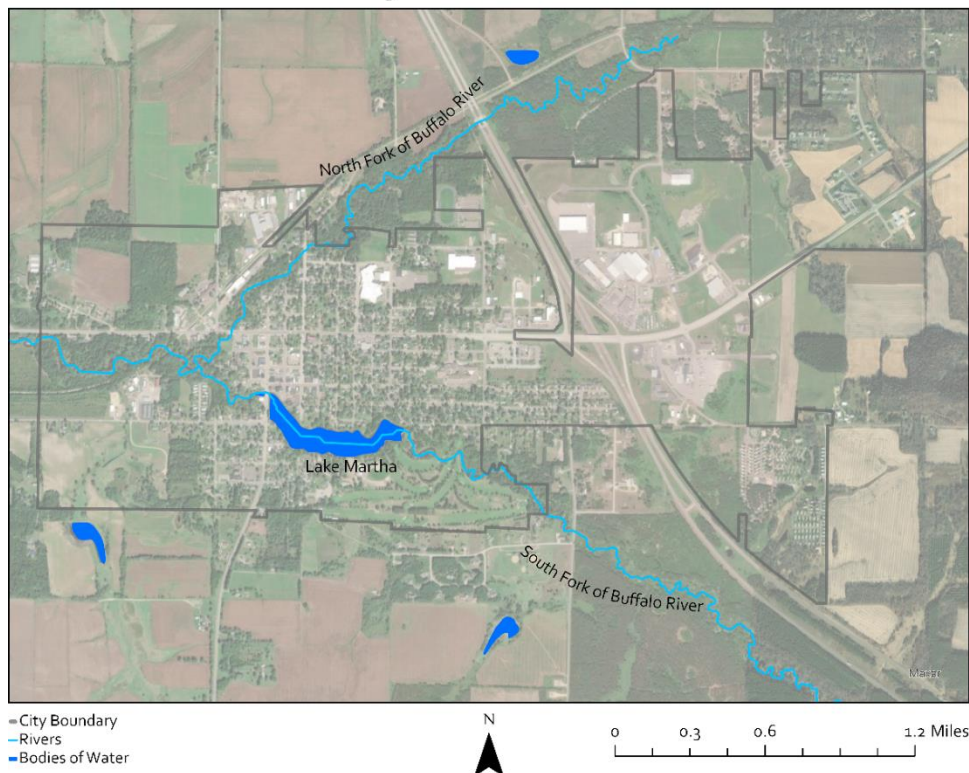
Overview

The City of Osseo is in Trempealeau County, Wisconsin, situated at the confluence of the North and South Forks of the Buffalo River. As of the 2020 census, it had a population of 1,811, which was an increase from the 2010 census, where it had a population of 1,701. The total area of the city is approximately 2.09 square miles: 2.06 square miles of which is land and 0.03 square miles of which is water. The landscape of the surrounding country is typical of the Driftless Area, characterized by its hilly terrain, rivers and valleys. Osseo is accessible via US Highway 10, US Highway 53, and Interstate 94, making it easy to reach from major population centers; it is about half an hour from Eau Claire, an hour from La Crosse, two hours from the Twin Cities, and two and a half hours from Madison.

Several parks, playgrounds, trails, ballparks, picnic shelters, various sport courts, and other athletic and recreational facilities provide excellent opportunities to be outdoors in Osseo. The recently renovated swimming pool, playground, picnic shelter, baseball field, and a beautiful nine-hole golf course with club house make up Stoddard Park on the south side of Lake Martha.

A modern hospital, new schools and a new library, bike and ATV trails, water access, all serve Osseo and the surrounding area, offering residents and visitors quality facilities and recreational opportunities.

City of Osseo





Land Use and Natural Resources

According to the 2023 Statement of Assessment for the City of Osseo, there are a total of 669 acres in Osseo. The most common land uses are commercial with 291 acres (43.5%), residential with 137 acres (20.5%), and agricultural with 111 acres (16.6%). Only 58 acres (8.7%) within the City are undeveloped. This reflects the small-town character of Osseo.

Osseo's land and water resources provide excellent habitat for wildlife resources. Of note is Lake Martha, a 13-acre lake with a maximum depth of eight feet. Visitors have access to the lake from a public boat landing. Fish include Panfish, Largemouth Bass and Trout. These constitute the main game species of Osseo. Both forks of the Buffalo River which run through the city are also important to note by providing recreational opportunities including hiking, fishing, canoeing, and sightseeing.

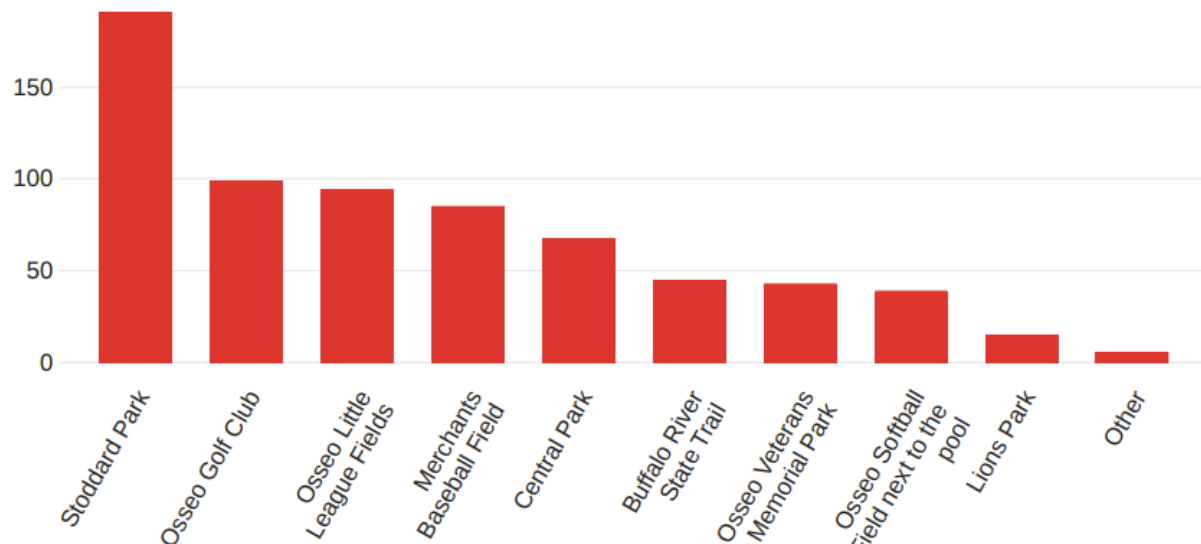
Wisconsin has developed the Wisconsin Natural Heritage Working Lists. The Wisconsin Natural Heritage Working Lists contains species known or suspected to be rare in the state. This data is available at the county level, but not at the municipal level. To see current species, reference <https://dnrx.wisconsin.gov/nhiportal/public/data/county>.

Outdoor recreation in Osseo can be highly dependent on the season. Osseo has seasonal variations in temperature and precipitation with changing weather patterns. Changes in seasonal patterns are leading to more extreme weather events, causing milder winters, hotter summers, and wetter springs. Snow cover disappears earlier in the spring, causing snow covered areas to shrink in recent years. This early snowmelt can increase the risk of flooding and shorten the winter sports season. It can also increase the spring rain season, leading to soggy ground, impacting trail areas and maintenance. An increase in the number of days with temperatures above 90 degrees days increases the risk of heat-related illnesses while providing an environment favorable to vector-borne diseases carried by ticks and mosquitos. As Osseo plans for future outdoor recreation needs, the effects of changing weather patterns will be considered to sustain local park systems for the future.



Favorite Places to Visit Based on Public Input

The results of the survey provided insight into the favorite places to visit in Osseo. MRRPC will further develop this list through future public input. According to the survey, respondent's favorite parks/recreational areas are:





Definitions

To assist in the interpretation and implementation of the City of Osseo Outdoor Recreation Plan, the following terms have been identified.

- **Community Park** – A park designed to serve several municipalities or neighborhoods and to provide many recreational opportunities for people of all ages.
- **Neighborhood Park** – A smaller park designed to serve the needs of the surrounding neighborhood.
- **Neighborhood Playground** – A facility often provided in conjunction with a community school. It is designed to serve the needs of the surrounding neighborhood and can accommodate a variety of informal or active athletic activities.
- **Specialized Recreation Area** – Areas restricted by design to certain uses and may not always be available for use by the public. In some cases they may serve a small segment of the community's population. Golf courses, historic sites, and conservancy areas are examples of specialized recreation areas.
- **Open Space** – Primarily land and water that is owned or managed by federal, state, or local governments, or a conservancy organization that is preserved for public use. Examples include wetlands, woodlands, wildlife refuges, prairies/meadows, rock outcroppings, etc.
- **Pathways and Parkways** – Spaces that are connections related to travel such as trail or water trail providing connectivity for recreation and/or transportation purposes.
- **Recreation Trail** – A travel way established through construction or use and is passable by the following, including but not limited to foot traffic, bicycles, cross country skis, off road recreation vehicles, snowmobiles, etc.



Recreation Standards

The Wisconsin Department of Natural Resources has set the following “rule of thumb” standards for designing recreation facilities:

“Rule of Thumb” Standards

Neighborhood Playground: 2 acres per 1,000 people

Community Park: 5 acres per 1,000 people

Specialized Recreation Area: as needed

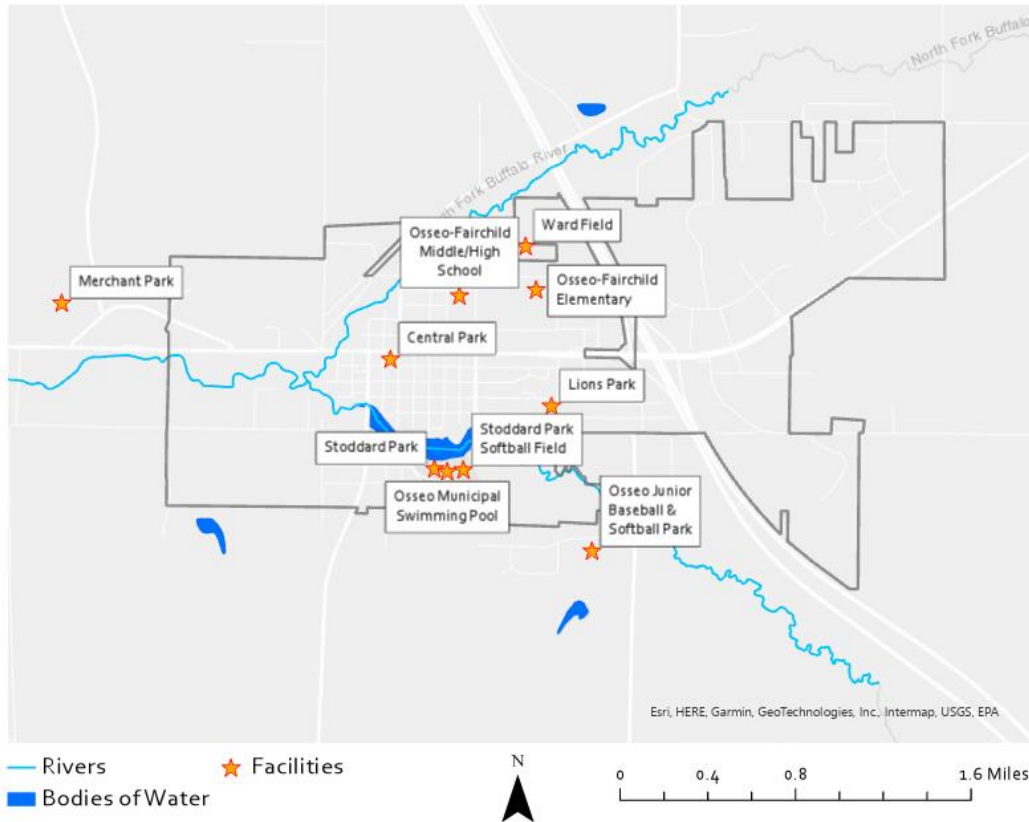
It is MRRPC’s observation that Osseo more than complies with these standards.





Property Inventory

Recreation Facilities in the City of Osseo



[Online Map of Rec Facilities](#)





Stoddard Park

13907 Pine St, Osseo, WI 54758

Situated along the southern edge of Lake Martha, Stoddard Park serves as a central location for outdoor activities and enjoyment for families. The park includes a children's playground, baseball field (listed separately), covered picnic areas, sand volleyball courts, and an updated swimming pool (listed separately).

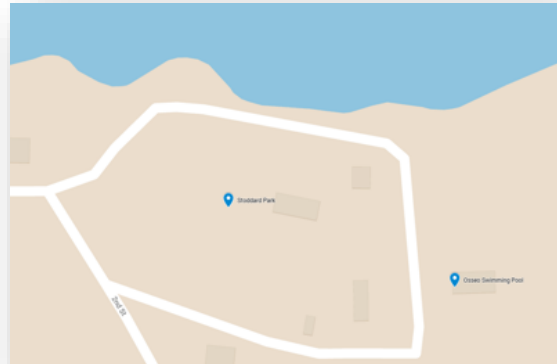
Facilities	
<ul style="list-style-type: none"> • Main Play Structure • Toddler Play Structure • Swing Set • Sand Digger • Teeter Totters (2) • Volleyball Courts (2) 	<ul style="list-style-type: none"> • Mens/Womens Bathroom Building • Lions Open Shelter • Park Main Open Shelter • Fishing Pier • Basketball ½ Court

Programing / Use	
<ul style="list-style-type: none"> • Turkey Trot • Lutfiskman Triathlon - Lake Martha Days • Lions Club Easter Egg Hunt • Lake Martha Days Volleyball Tournament (with Osseo Golf Course) • Osseo-Fairchild Summer School Park & Pool Session (2 week Program) • Osseo-Fairchild 4k End of Year Park Day • Osseo-Fairchild 3rd Grade Lake Martha Fishing Stock w/Wisconsin DNR 	<ul style="list-style-type: none"> • Osseo-Fairchild 3rd Grade Pen Pal Picnic Day w/Various Local School Districts • Osseo-Fairchild 5th Grade End of Year Park Day • Osseo-Fairchild Middle School Disc Golf Unit (hoola hoops & frisbees) • Osseo-Fairchild High School Gym Class Kayak Unit • Osseo Evangelical Lutheran Church Ladies Aide May Meeting & Picnic



Stoddard Park (continued)

Improvements / Upgrades	
<ul style="list-style-type: none">• Updated Play Structures & Equipment• New Poured-In-Place rubber surfacing around play equipment• ADA compliant zero Entry to play area• Path for safe walking/biking through & around park• Solar Security Lighting around Park, Courts, Walkways & Fishing Pier• Betterment & addition of Bathroom Facilities• ADA Play Equipment (Swings, Rocker, Toddler Imagination Stations, Merry-Go-Round)	<ul style="list-style-type: none">• Sensory Friendly Play Features• Outdoor Exercise equipment• Outdoor Multi-Sport Court (Tennis, Volleyball, Basketball, Pickleball, etc)• Removal of unsafe & dying trees• Improvement of Volleyball courts to remove tree roots in sand court• Trash receptacles• Picnic Table & Seating Areas• Bike Racks





Stoddard Park Softball Field

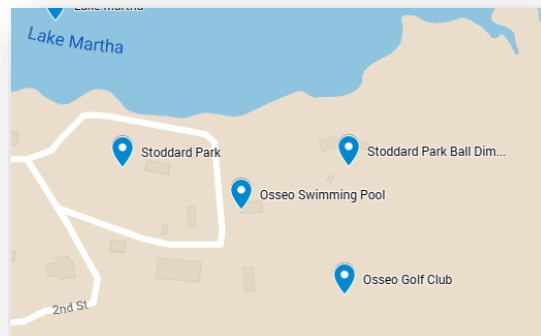
13907 Pine St, Osseo, WI 54758

The softball field at Stoddard Park is used by several organizations, the high school, and leagues in the community.

Facilities	
<ul style="list-style-type: none">• Softball Field• Concessions Stand w/Bathroom & Kitchen Facilities• Stadium Seating Bleachers & Media Stand	<ul style="list-style-type: none">• Dug Outs• Batting Cages (2)• Benches & Picnic Tables

Use / Programing	
<ul style="list-style-type: none">• High School Softball Games• Little League Softball Games• Legion Slow-Pitch Softball Games	<ul style="list-style-type: none">• Legion Fast Pitch Softball Games• Bar League Slow-Pitch Softball Games• Osseo-Fairchild School District Summer School Softball/Kickball Circuit Day

Improvements / Upgrades	
<ul style="list-style-type: none">• Field Lights• Refrigeration Coolers• Update Bathrooms - ADA compliant	<ul style="list-style-type: none">• Picnic Tables/Benches• Bike Racks• Trash receptacles





Osseo Municipal Swimming Pool in Stoddard Park

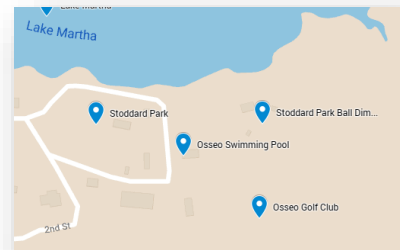
13418 Park Ave, Osseo, WI

The Osseo Municipal Swimming Pool in Osseo, Wisconsin, is a popular local destination for families and swimmers during the summer months. Featuring a large main pool with varying depths, it caters to both casual swimmers and those looking to lap swim. The facility includes a separate kiddie pool, ensuring a safe and enjoyable environment for the youngest visitors. With ample seating areas, a diving board, and occasional poolside events, it's a hub of community activity and relaxation under the sun.

Facilities	
<ul style="list-style-type: none"> Pool & Deck Pool House & Locker Rooms 	<ul style="list-style-type: none"> Chemical Shed Storage Shed (Summer 2024)

Use / Programing	
<ul style="list-style-type: none"> Red Cross Swimming Lessons (6 weeks, AM & PM Levels 1-6) Teen Swimming Nights Swim-In theater Nights 	<ul style="list-style-type: none"> Adult Swims Osseo-Fairchild Summer School Park/Pool Circuit (2 weeks)

Improvements / Upgrades	
<ul style="list-style-type: none"> Expand Hallways & Exterior Doorways for ADA Compliance Updated Security Cameras (Cloud Based) Fix/Update Outdoor Sound Speakers Add/Replace Picnic Tables & Seating Recreational Pool Safe Toys (<i>Balls, Kickboards, Volleyball Net, Bball Hoop, sink toys, etc</i>) Shade Screens 	<ul style="list-style-type: none"> Water Aerobics Equipment to expand programming (<i>Ankle Weights, Foam Dumbbells, noodles, etc</i>) Infant - Youth life jackets & Puddle Jumpers POS System &/or Til w/inventory capabilities Video Projector & Screen Digital Membership System





Osseo Junior Baseball & Softball Park (Osseo Little League Parks)

W13095 Ball Park Rd, Osseo, WI 54758

[Osseo Junior Baseball & Softball](#) provides T-Ball, Baseball and Softball programming for children in grades 4K-8 in the Osseo-Fairchild School District. Each year more than 250 youth from Osseo and surrounding communities use the facility. The organization strives to make things better for the children, and those who come to enjoy the games. The City of Osseo has agreed to insure and help maintain the park area. The Town of Sumner has also promised to help maintain the park and assist with machinery and manpower.

Facilities	
<ul style="list-style-type: none">• Concession, Storage & Bathroom Building• Equipment Garage• Batting Cages (2)	<ul style="list-style-type: none">• Playground Structure• Swing Set

Use / Programing	
<ul style="list-style-type: none">• Boys & Girls T-Ball Program• Softball 8u - 14u	<ul style="list-style-type: none">• Baseball 8u - 14u• Umpire Clinic

Improvements / Upgrades	
<ul style="list-style-type: none">• Additional seating• Update concession stand windows	<ul style="list-style-type: none">• Field Lighting• Bike Racks





Central Park

On Main Street by City Hall

Central Park in Osseo, Wisconsin is a serene and welcoming public space known for its lush greenery and community-focused amenities. It features well-maintained walking paths, picnic areas, and a playground, making it a favorite place for families and individuals of all ages. The park often hosts local events and gatherings, including festivals and outdoor concerts that bring the community together. With its open spaces and scenic surroundings, Central Park is a cherished oasis in the heart of Osseo.

Facilities	
<ul style="list-style-type: none">• Band Shell / Stage• Shelter• Playground	<ul style="list-style-type: none">• Walking Paths• Picnic Area

Programing / Use	
<ul style="list-style-type: none">• Weekly Concerts (during summer)• Special Events	<ul style="list-style-type: none">• Christmas Lights• Santa on Stage

Improvements / Upgrades	
<ul style="list-style-type: none">• Maintain paths and walkways• Landscaping	<ul style="list-style-type: none">• Maintain bandshell





Lions Park

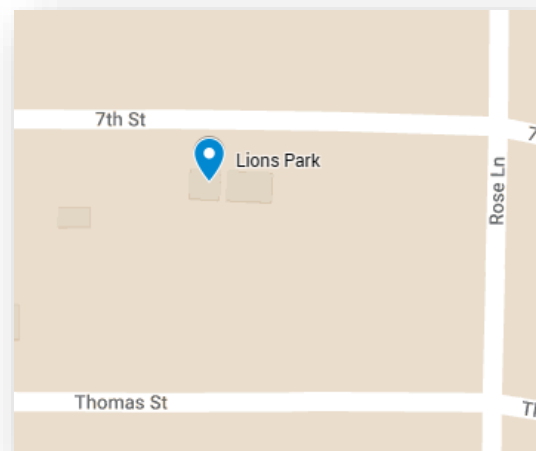
13007 7th St, Osseo, WI 54758

A nice community park with big oak trees. One pavilion, one picnic table, two charcoal grills. Several pieces of playground equipment, and a large wooded field.

Facilities	
<ul style="list-style-type: none">Lions ShelterSwing Set	<ul style="list-style-type: none">Climbers (2)

Use / Programing	
<ul style="list-style-type: none">None	

Improvements / Upgrades	
<ul style="list-style-type: none">Updated Play EquipmentNew surfacing around play equipmentRemoval of Dying Ash trees	<ul style="list-style-type: none">Trash receptaclesBike Rack

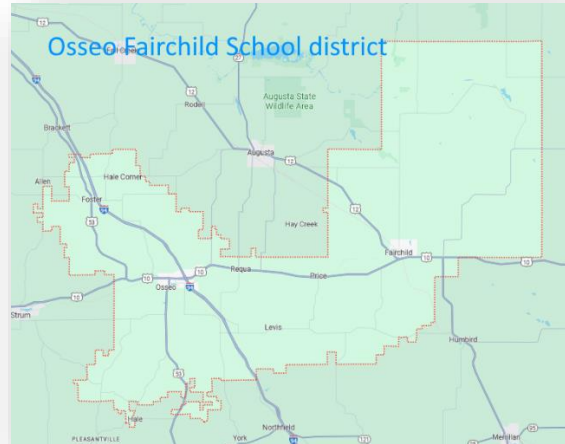




Other Recreational Facilities

School Recreation Facilities and Areas

The City of Osseo is in the [Osseo-Fairchild School District](#). Within the City of Osseo there is the Osseo-Fairchild Middle/High School and Osseo-Fairchild Elementary. Public School Districts are allowed to apply for Federal Land and Water Conservation Funds (LAWCON). Most schools have playground equipment that is available for use by the general public throughout the year.



Ward Field / High School

51012 Rose Ln, Osseo, WI 54758

The Osseo School District operates and maintains the athletic fields. The field located at the Osseo Senior High School is used by the Osseo football teams, soccer teams, lacrosse teams and track & field. Ward Field is a high school football field located in Osseo, Wisconsin, known for hosting local high school football games and events.





Osseo Golf Club

13600 2nd Street Osseo, WI 54758



Osseo's public 9-hole course is constructed with blue grass tees, greens and fairway. The course consists of wide-open fairways cut through trees and The Buffalo River, which provides the most significant danger on the course.



Lake Martha

Lake Martha is a 13 acre lake located within the City of Osseo partially bordered by Stoddard Park. It has a maximum depth of 8 feet. Visitors have access to the lake from a public boat landing. Fish include Panfish, Largemouth Bass and Trout. Lake Martha Days (entire city) takes place every year in Osseo, WI and the locals like to describe this beloved event as "family fun with Norwegian flair". The lake is created by a dam and is filling with silt from the river that feeds it. It has been determined that the lake needs to be dredged in the near future (1 to 3 years).

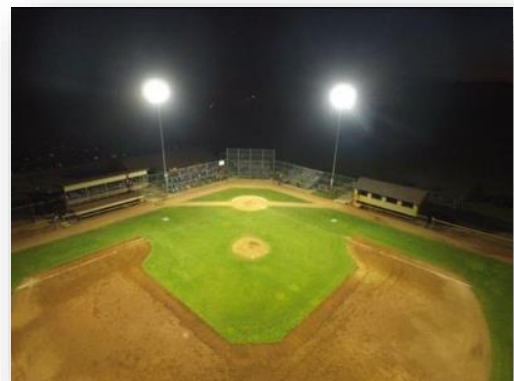
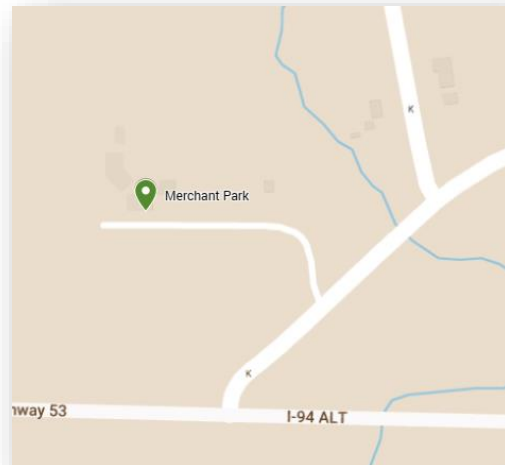




Merchant Park / Baseball Field

14477 Co Rd. K, Osseo, WI 54758

The [Jon Soiney baseball field](#), hosting the [Osseo Merchants of the Chippewa River Baseball League](#), is renowned for its comprehensive amenities including lights, a covered pavilion, dugouts, grandstand seating, batting cages, and a playground, alongside its distinctive field dimensions. Despite being located outside the city, it is celebrated as one of the nicest fields in the state due to its extensive features and grandstand.





State Outdoor Recreation Facilities

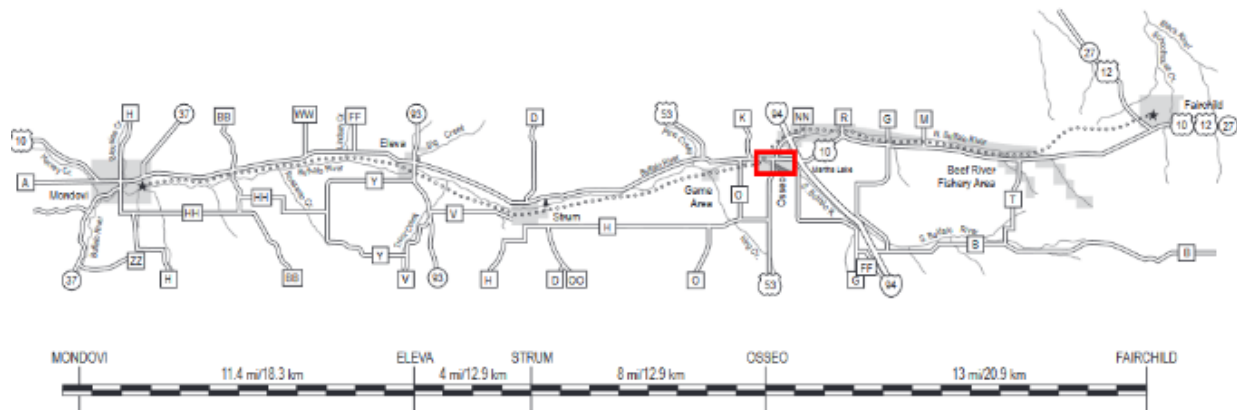
Buffalo River State Trail

Part of Trail runs through Osseo, WI 54758

The [Buffalo River State Trail](#) passes through Osseo. In total, it runs 36 miles between Mondovi and Fairchild. The river, which lends its name to the trail, was named by early French explorers. They called it Riviere de Beeufs for the many bison that once inhabited the area. The surface of this trail is relatively unfinished, as many areas of old cinder ballast or sand blows mean this trail is better for mountain bikes or hiking rather than the typical narrow tired touring type bicycle. Horseback riding is permitted on the Buffalo River State Trail between May 15 and October 31. ATVs are permitted on the Buffalo River State Trail May 15-October 31.



Buffalo River State Trail





Buffalo River Fishery Area

The [Buffalo River Fishery Area](#) is not located within

Osseo, but it is close by.

The area spans across 1,290 acres, with 840.5 acres designated as state-owned land and an additional 450.45 acres under easement.

Situated approximately 6-8 miles both west and east of Osseo, the landscape is distributed among scattered parcels along the Buffalo River.

Popular activities within this expanse include trout fishing, berry picking, and hiking, drawing enthusiasts to its diverse recreational offerings. The habitat within comprises stream environments, shrub marshes, and upland forests, creating a rich and varied ecosystem for visitors to explore and enjoy.



Buffalo River Trail Prairies

Buffalo River Trail Prairies, a state natural area, contains four high quality remnants located along the Buffalo River State Recreation Trail. Once an old railroad right-of-way near the meandering Buffalo River, the trail now harbors diverse stretches of prairie that were historically maintained by the unintentional fires sparked by passing railcars. The four prairie remnants stretch between Eleva and Osseo. One is located west of Eleva, two east of Strum and the largest is a five-mile stretch east of Osseo. The prairies contain numerous species with



grasses including big and little blue-stem and Indian grass. Showy forbs include stiff goldenrod, prairie coreopsis, spiderwort, and flowering spurge. Buffalo River Trail Prairies is owned by the DNR and was designated a State Natural Area in 2002 and is 153 acres in size. Access is from the junction of I-94 and Highway 10 in Osseo, go east on 10 3.9 miles to a parking area on the north side of the highway. The largest section of prairie runs about 3 miles west and 2 miles east of the parking area. The other three natural area remnants are all accessible via the recreational trail.



Planning Process

The City of Osseo's Outdoor Recreation Planning Committee worked with Mississippi River Regional Planning Commission (MRRPC) to develop this plan. Together they created an online survey to solicit public input on outdoor recreation facilities and activities offered in Osseo. This survey was conducted through Qualtrics. These surveys were posted on MRRPC's website, the City of Osseo's Website, and were emailed to stakeholders by both the City and MRRPC.

Information from the survey will be considered to help develop local priorities and objectives for the future planning of Osseo's outdoor recreation facilities. The list of priorities and objectives will be referenced frequently by City staff to secure funding for projects. This plan will be reviewed and updated every 5 years to keep priorities and objectives current.

Local Priorities and Objectives

The city of Osseo is dedicated to continuing to maintain their existing facilities as well as exploring a vision for the future that includes new park facilities, better access to the waterways and shoreline for walking, fishing, and boating.

The plan identifies specific improvements to each city park, a desire to work with partners on other recreational facilities not controlled by the city and making Osseo a part of a larger regional recreational footprint.

The Stoddard Park Rejuvenation Committee has been working on both planning and funding for a major upgrade to the facilities at Stoddard Park including an ADA accessible playground, new equipment, ground surfacing, lighting, tables, benches and more. This group is a public private partnership and will continue to advocate for and move this project forward.

This city has also identified a need to improve access to the rivers and Lake Martha for boats, canoes, and kayaks. In addition to this access, the need to dredge the lake is something the city would like to work with the DNR to accomplish.

The Osseo survey suggested strong support for the above improvements. In addition, citizens asked that the city consider additional trails, dog parks, sports courts, and facilities, including pickleball, tennis, basketball, and volleyball courts.



Implementation

Osseo's Priorities, Objectives and Action Items for 2024-2029

The city will use the created goals and objectives, park projects, regular maintenance, public safety, and City priorities in line with available resources to facilitate this plan. Some of these projects will require working with local partners, the county, state, or federal agencies to complete. The survey and other public input will also help establish priorities moving forward.

Goals (from page 2&3)

- Osseo is committed to working with our schools, businesses, volunteer organizations and other units of government to provide accessible, engaging, affordable and high-quality outdoor recreational opportunities, events, programs, and facilities.
- The Osseo Community will facilitate access to the outdoors and recreational opportunities for both citizens and visitors to the area.
- Osseo is committed to maintaining, improving, and expanding outdoor facilities.
- Osseo will focus on establishing and enhancing communication regarding our facilities, events, and programming using both technology and all available media outlets.
- Osseo will prioritize health and wellness and environmental impact when making outdoor recreational decisions.
- Osseo will work with community members to seek input and priorities on projects while seeking funding and partnerships to minimize financial impact on our taxpayers.

health
wellness
citizens
maintain
priorities
improve
seek
input
communication
partnerships
visitors
expand
funding





Individual Park Projects

Stoddard Park

- Updated Play Structures & Equipment
- New Poured-In-Place rubber surfacing around play equipment
- ADA compliant zero Entry to play area
- Path for safe walking/biking through & around park
- Solar Security Lighting around Park, Courts, Walkways & Fishing Pier
- Betterment & addition of Bathroom Facilities
- ADA Play Equipment (Swings, Rocker, Toddler Imagination Stations, Merry-Go-Round)
- Sensory Friendly Play Features
- Outdoor Exercise equipment
- Outdoor Multi-Sport Court (Tennis, Volleyball, Basketball, Pickleball, etc.)
- Removal of unsafe & dying trees
- Improvement of Volleyball courts to remove tree roots in sand court
- Trash receptacles
- Picnic Table & Seating Areas
- Bike Racks

Stoddard Park Softball Field

- Field Lights
- Refrigeration Coolers
- Update Bathrooms - ADA compliant
- Picnic Tables/Benches
- Bike Racks
- Trash receptacles

Osseo Municipal Swimming Pool in Stoddard Park

- Expand Hallways & Exterior Doorways for ADA Compliance
- Updated Security Cameras (Cloud Based)
- Fix/Update Outdoor Sound Speakers
- Add/Replace Picnic Tables & Seating
- Recreational Pool Safe Toys (Balls, Kickboards, Volleyball Net, Bball Hoop, sink toys, etc.)
- Shade Screens
- Water Aerobics Equipment to expand programming (Ankle Weights, Foam Dumbbells, noodles, etc.)
- Infant - Youth life jackets & Puddle Jumpers
- POS System &/or Til w/inventory capabilities
- Video Projector & Screen
- Digital Membership System



City of Osseo Outdoor Rec Plan 2024 - 2029

Osseo Junior Baseball and Softball Park (Osseo Little League Parks)

- Additional seating
- Update concession stand windows
- Field lighting
- Bike racks

Central Park

- Maintain paths and walkways
- Landscaping
- Maintain bandshell

Lions Park

- Updated Play Equipment
- New surfacing around play equipment
- Removal of Dying Ash trees
- Trash receptacles
- Bike Rack

Lake Martha

- Dredging
- Better Access
- Shoreline Improvements

Survey and Public Input for Future Projects

As we continue to grow and improve the City of Osseo, we will look to our community members for input and ideas. The survey used in the process of developing this plan yielded several ideas that we will include in our development process as we move forward.

Our Partners

Recreation in Osseo is a team effort. The community must work with the Schools, County, State, Surrounding Communities, The Chamber and Downtown, Service Organizations, Leagues, Clubs, Private Entities, and the Businesses who all work together to enhance the outdoor experience in our city. We could not and cannot do it without you.

Thank You!



Survey Results Summary

The City prepared a survey during the process of updating its Outdoor Recreation Plan. The survey was open primarily during January 2024, with the earliest survey response being January 10, and the last survey response being February 2. The survey was made available on the City's website and MRRPC's website. The survey was also emailed to stakeholders in the community. A total of 255 responses were received and a summary of the results is included below. The full survey results can be found in Appendix D.

The demographics of the survey respondents varied widely, but some trends were seen. These include:

- 1) **Residency:** The majority of survey respondents are residents of the City of Osseo, with almost as many coming from the Osseo-Fairchild School District. A small number of respondents live outside these areas, both in Trempealeau County and outside it, but having connections to Osseo.
- 2) **Duration of Residency:** Respondents include a mix of long-term and newer residents, indicating a diverse range of perspectives on outdoor recreational needs and improvements. Most respondents have lived in Osseo for more than 10 years.
- 3) **Age Distribution:** The age groups of respondents span from 18 to 65 or older, suggesting that the survey captured a wide range of age demographics, likely reflecting a variety of recreational interests and priorities. Most respondents were between 30 and 45.
- 4) **Employment Location:** Many respondents work within or near Osseo, including those who work remotely, indicating a community that largely resides and works in or around the city. A substantial number of respondents work in the Eau Claire area, which is to be expected given Osseo's proximity.
- 5) **Outdoor Recreation Participation:** Respondents participate in outdoor recreation activities with a range of companions, including children, spouses, extended family, and friends, highlighting the importance of outdoor recreational spaces and programs for family and community engagement.

There were also trends seen in utilization of facilities and broad agreement about current facilities and programs.

- 1) **High Usage of Parks:** Many respondents report using the city parks and outdoor facilities often, with frequent visits ranging from multiple times a week to at least once a month, indicating a strong engagement with local parks.



City of Osseo Outdoor Rec Plan 2024 - 2029

- 2) **Positive Sentiments towards Programs:** There is a general satisfaction with existing youth sports, adult programs, and community events. This suggests that the programs currently offered are valued by the community and play a significant role in residents' recreational activities.
- 3) **Demand for More Programs:** Despite the satisfaction, there is a clear demand for more diverse organized sports programs and events, such as soccer, pickleball, and more inclusive activities for all ages, reflecting a desire for expanded recreational opportunities.
- 4) **Preferred Parks:** Respondents showed a preference for Stoddard Park, the Osseo Golf Club, and the Osseo Little League Fields as their favorite parks and recreational areas. These preferences highlight the importance of these locations for leisure and organized sports activities, reflecting their popularity and potential areas for targeted improvements and program expansions.
- 5) **Interest in Facility Improvements:** Respondents express a strong interest in improving and expanding facilities, including playgrounds, sports courts, and trails. This reflects a desire for not only maintaining but also enhancing the quality and variety of recreational spaces.

Regarding respondent's ideas for improvements, several trends were seen:

- 1) **Enhanced Playgrounds and Equipment:** Respondents frequently mentioned the need for updated and more accessible playground equipment. Improvements to safety and the addition of new features to engage children of various ages and abilities are key desires.
- 2) **Trail System Expansion and Improvement:** There is a significant interest in expanding and developing paved walking and biking paths/trails. Respondents desire better connectivity around town and safer, more accessible options for outdoor activities like walking, running, and biking.
- 3) **Sports and Recreation Facilities:** The community expressed a strong interest in developing new sports courts and facilities, including pickleball, tennis, basketball, and volleyball courts. There is also support for improvements to the golf course and the addition of facilities for emerging sports.
- 4) **Water Recreation and Park Enhancements:** Suggestions include dredging Lake Martha to enhance water sports, adding boat/kayak rentals, and improving the swimming pool. Respondents also desire more picnic areas, pavilions, and handicap accessibility in parks.
- 5) **Dog Parks and Off-Leash Areas:** Developing more dog off-leash parks or trails is a notable interest among respondents. This reflects a community desire for pet-friendly recreational options that cater to dog owners and provide safe spaces for pets to play and socialize.



State Review of Recreation Demand

Introduction

The State of Wisconsin has determined that the planning of outdoor recreation facilities is of utmost importance for the development of healthy and viable communities. Three important parts of recreation planning are:

- (1) Determine the demand for several types of outdoor recreation activity,
- (2) Inventory the existing facilities which accommodate outdoor recreation activity,
- (3) Evaluate the existing facilities and determine the need for improvements or additions to meet the existing and anticipated recreational demand.

Recreational Demand

As we progress into a new century, events and issues that influence outdoor recreation in the future are changing. Issues which will influence future outdoor recreation activities include:

- Land use patterns are shifting,
- Ownership patterns in rural areas are changing,
- Budgets for operation and maintenance of recreation resources are not expected to increase.



For guidance on the demand for recreational outdoor activities, a review of the [Wisconsin Statewide Comprehensive Outdoor Recreation Plan \(SCORP\) 2019-2023](#) was conducted. During the development of the SCORP, numerous Wisconsin residents were questioned as to how often they participate in various recreation activities. Data was collected at 8 regional levels; Osseo lies in the Mississippi River Corridor.

5

This plan lays out **five** overarching goals for outdoor recreation.



1. Boost participation in outdoor recreation



2. Grow partnerships



3. Provide high-quality experiences



4. Improve data to enhance visitor experiences and benefits



5. Enhance funding and financial stability





Favorite Places to Visit Based on Public Input (SCORP)

Of the people providing input, the majority (67%) selected the quality of trails as one of the top four most crucial factors in determining their favorite property to visit. This mirrors the results from the Osseo survey.

Wisconsinites have historically participated in outdoor recreation at higher rates than the national average.

Seventy-seven percent of SCORP respondents believe more outdoor recreational opportunities are needed in the Mississippi River Corridor Region. The opportunity that was most frequently selected as needed in the Mississippi River Corridor Region was more trails for hiking, walking, or running, which was selected by nearly half of respondents.

Future Recreation Needs from State Plan (SCORP)

Based on the 2019-2023 SCORP, the Mississippi River Corridor Region rates recreational activities as high, medium, or low relative to needs of the region. The groupings are as follows:

Future Recreation Needs - High	Future Recreation Needs - Medium	Future Recreation Needs - Low
Bicycling – touring/road riding	ATV/UTV riding	Dog sledding/ skijoring
Bicycling – mountain/off road	Bicycling – fat tire/snow	Dog training
Bird or wildlife watching	Fishing – lake from shore	Dog Trialing
Camping – developed	Fishing – ice fishing	Geocaching
Camping – primitive	Four-wheel vehicle driving	Off-highway motorcycle riding
Canoeing or kayaking	Horseback riding	Rock climbing
Cross Country Skiing	Horse cart driving	Sailing, windsurfing, rowing, etc.
Dog Walking	Hunting – migratory birds	Snowmobiling
Fishing – lake from vessel	Hunting – small game	Scuba diving/snorkeling
Fishing – river from vessel	Hunting – turkey	Whitewater rafting
Fishing – stream or shore wading	Motorboating (waterski, tubing)	
Gather mushrooms, berries, etc.	Swimming in lakes and rivers	
Hiking, walking, trail running	Target shooting – archery	
Hunting – big game	Target shooting – firearms	
Nature photography	Trapping	
Nature based education programs		
Picnicking		
Snowshoeing		
Visit a beach, beach walking		



Summary of Previous Outdoor Recreation and Other Plans

The following plans intersect with and have contributed to the City of Osseo's Outdoor Recreation Plan. It should be noted that this plan is the first Outdoor Recreation Plan the City of Osseo has had.

City of Osseo Comprehensive Plan – 2009

The [City of Osseo Comprehensive Plan](#) provided the most comprehensive inventory of opportunities for recreation within Osseo. While it has been 15 years since the plan's creation, it was still useful in the development of this plan.

Trempealeau County Outdoor Recreation Plan – 2022

The [Trempealeau County Outdoor Recreation Plan](#) provided inventory on some of the existing opportunities in Osseo, as well as the broader context of the County.

Trempealeau County Hazard Mitigation Plan 2019-2023

In 2019, the Emergency Management Department updated the Hazard Mitigation Plan, which is a comprehensive assessment of natural and man-made disasters that could pose a threat to Trempealeau County. The assessment includes risks, emergency response plans, and strategies for mitigation, as well as an inventory of critical facilities and services in the County.



APPENDIX A

Grant/Funding Opportunities

Funding Programs: Funding for recreational development can come from several sources, both public and private. Most funding for this type of development comes from public local funds. Primarily, local funds come from a number of sources including the sale of bonds, allocations from the local tax base, and donations from individuals and organizations. Non-local funding can come from a number of sources, either in the form of a grant or a loan. Currently, the DNR, the U.S. Fish and Wildlife, and Rural Development (RDA) provide competitive funding relating to outdoor recreation.

Wisconsin Department of Natural Resources



The [Wisconsin Department of Natural Resources Grant Programs](#) is a main source of funding for outdoor recreation facilities. [The Knowles-Nelson Stewardship Fund](#) was created in 1989 to preserve important natural communities, protect water quality and fisheries, and expand opportunities for outdoor recreation., administered by the DNR, is a fund designed to provide opportunities for outdoor recreation, protect land sensitive to environmental degradation, conserve and restore wildlife habitat and protect water quality. As a prerequisite to the following WDNR funding programs, applicants must first submit a comprehensive outdoor recreation plan, such as this plan, or a master plan that has been

approved by resolution by a local governing unit, or a plan of a higher unit of government. Applicants submitting qualifying comprehensive outdoor recreation plans or master plans may receive eligibility to apply for funding for up to five years. The DNR's priority for funding is land acquisition, followed by facility development.

Rural Development Administration (USDA - Rural Development)

The [USDA](#) provides a loan program, which provides Community Facility Project Loans to applicants with areas of less than 20,000 people, for the purpose of constructing, enlarging, or improving community facilities for health care, public safety, or public services. These loans should be secured with bonds or notes pledging taxes, assessments, or revenues.

There are many Rural Development programs that are different areas of community development that could provide loans, or possibly grants, if criteria are met for income and utility rates, for facilities in the communities that are smaller in size.

Did You Know?

OutWiGo is a statewide initiative encouraging people to improve their overall health and wellness by being active in the outdoors.

Since launching in May 2018, over 2,000 residents have pledged to be active in Wisconsin's Parks, Forests and Trails. OutWiGo aims to reach additional users through outreach, partnership events and social media marketing.

Learn more at:
<https://dnr.wi.gov/topic/parks/outwigo.html>





Transportation Assistance Program (TAP) Wisconsin DOT



The [Wisconsin Department of Transportation TAP program](#) provides funds for non-traditional projects within programs called the Safe Routes to School Program, Transportation Enhancements, and the Bicycle and Pedestrian Facilities Program. The TAP program provides up to 80 percent reimbursement grants for approved projects that target transportation-oriented pedestrians and bicycle planning and construction projects.

Community Development Block Grant, Department of Administration

The [Wisconsin CDBG program](#) funds support infrastructure and facility projects for communities. Examples of eligible projects include improvements, repairs, or expansions of streets, drainage systems, water and sewer systems, sidewalks, and community centers.



Grant Finder



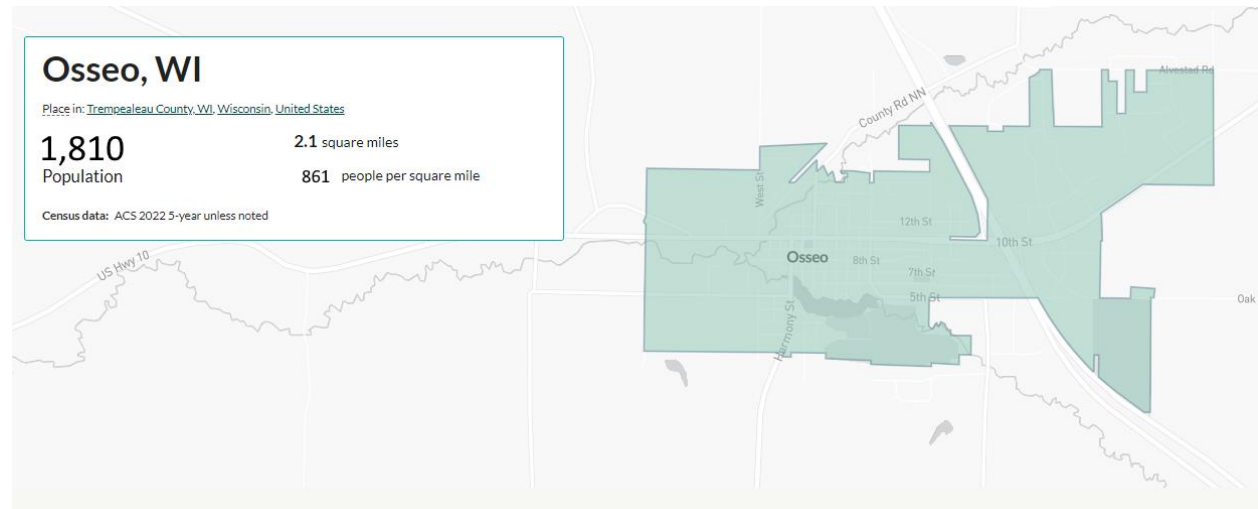
The Wisconsin League of Municipalities is adding [GrantFinder](#) as a new service for their members to identify eligible grants. This Grants database will identify state, federal, corporate and foundation grants available to local governments. This is a free service for League members.



Appendix B Demographics

Social Characteristics and Demographics

Population and Population Characteristics



According to the US Census, the City of Osseo experienced population growth between 2000 and 2020, an increase of 8.5%. Projections from the Wisconsin Department of Administration for Osseo's population indicate that it is expected to grow by only 0.2% from 2020 to 2040.



According to the 2022 ACS 5-Year Estimates, the median age of Osseo is 40.8, which is almost the same as in Trempealeau County (40.9), Wisconsin (39.9) and the United States (38.5). A similar trend is seen the percentage of Osseo under 18 (24.2%) and over 65 (16.8%) – almost the same as Trempealeau County, Wisconsin, and the United States. Therefore Osseo closely



City of Osseo Outdoor Rec Plan 2024 - 2029

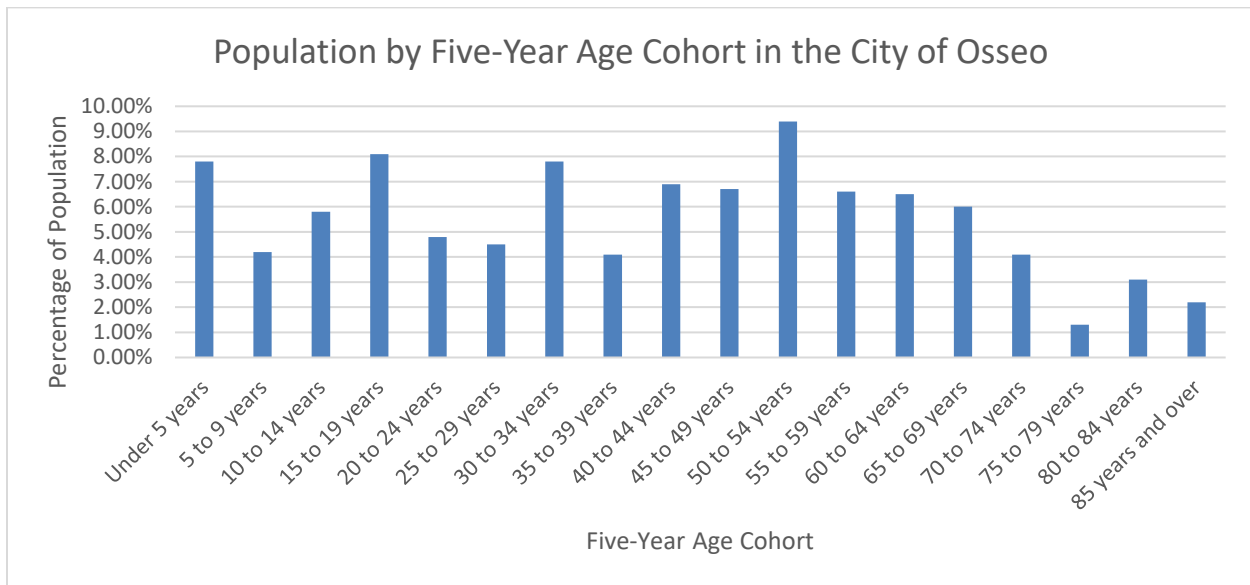
mirrors trends seen both in the area and nationwide, but it must be remembered that this trend is an aging one. Over the near future, both the median and the percentage of the population over 65 are expected to increase. These characteristics should be considered when planning Osseo's future needs for outdoor recreation. While Osseo is still quite a young community, it is increasing in age and will experience a growth in its older population. Facilities that can be utilized by many ages should be prioritized.

Table 2.1 Population and Projected Population of the City of Osseo

2000	2010	2020	2030	2040	Change (2000 to 2020)	Change (2020 to 2040)
1,669	1,701	1,811	1,830	1,815	8.5%	0.2%

Source: US Census 2000, 2010, 2020 and Wisconsin Department of Administration Municipal Population Projections

The population of the City of Osseo, as depicted in the chart, suggests a demographic that is predominantly middle-aged, with the highest percentage of residents falling within the 50 to 54 years age group. There is a notable presence of young children, with the 'Under 5 years' and '5 to 9 years' cohorts collectively accounting for over 14% of the population. The chart reflects a gradual decrease in population with increasing age, with each successive age group beyond 55 years constituting a smaller percentage of the population. The elderly population, especially those aged 80 and above, make up the smallest percentages, indicating a lesser proportion of older residents within the city.



Source: 2022 ACS 5-Year Estimates, S0101 Age and Sex



Household Income

Income

\$31,134

Per capita income

about 90 percent of the amount in Trempealeau County: \$34,694

about 80 percent of the amount in Wisconsin: \$40,130

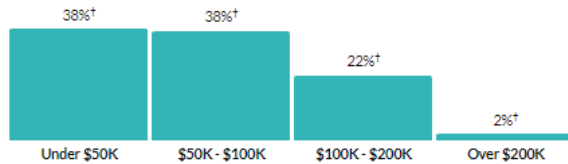
\$61,296

Median household income

about 90 percent of the amount in Trempealeau County: \$68,474

about 80 percent of the amount in Wisconsin: \$72,458

Household income



According to the 2022 ACS 5-Year Estimates, the median household income in Osseo is \$61,296, which is less than Trempealeau County (\$68,474), Wisconsin (\$72,458), and the United States (\$75,149). However, it must be remembered the effect of cost of living. Osseo's poverty rate (7.3%) is comparable to that of Trempealeau County (7.4%), and substantially less than that of Wisconsin (10.7%) and the United States (12.5%). The industries with the most employees in Osseo are Educational services, and health care and social assistance (22.9%), Manufacturing (20.7%), and retail trade (12.3%).

Households

744

Number of households

Trempealeau County: 12,370

Wisconsin: 2,425,488

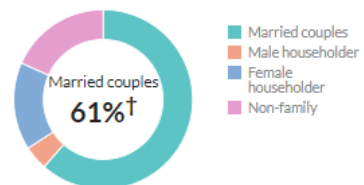
2.3

Persons per household

a little less than the figure in Trempealeau County: 2.5

a little less than the figure in Wisconsin: 2.4

Population by household type



Rural/Urban Distribution

According to the 2020 US Census, Osseo is rural. 2,000 housing units or a population of 5,000 define an urban area, and Osseo is well under both of these cutoffs. However, Osseo has somewhat of an urban character, with many residents living in relatively small lots. The small lot dweller does not have the capability to provide a myriad of extensive outdoor recreation experiences on his or her own land. Therefore, they are more dependent upon a public park system which offers a broad range of outdoor opportunities including hunting, hiking, camping, and picnicking.





Housing and Education

Value

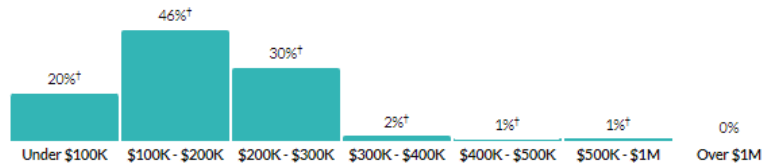
\$167,000

Median value of owner-occupied housing units

about 90 percent of the amount in Trempealeau County: \$193,700

about three-quarters of the amount in Wisconsin: \$231,400

Value of owner-occupied housing units



Geographical mobility

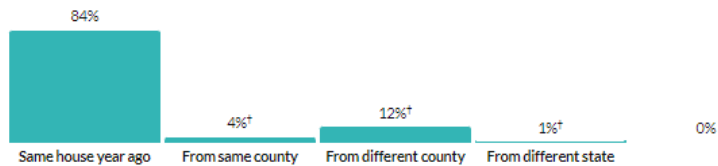
16.1%

Moved since previous year

more than 1.5 times the rate in Trempealeau County: 9%†

about 25 percent higher than the rate in Wisconsin: 12.8%

Population migration since previous year



Educational attainment

89.8%

High school grad or higher

about the same as the rate in Trempealeau County: 91.7%

a little less than the rate in Wisconsin: 93.1%

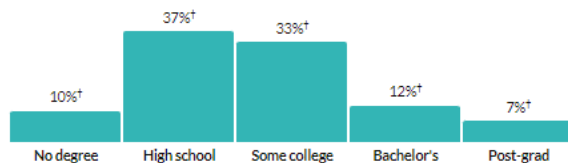
19.2%

Bachelor's degree or higher

about the same as the rate in Trempealeau County: 19.7%

about three-fifths of the rate in Wisconsin: 32%

Population by highest level of education



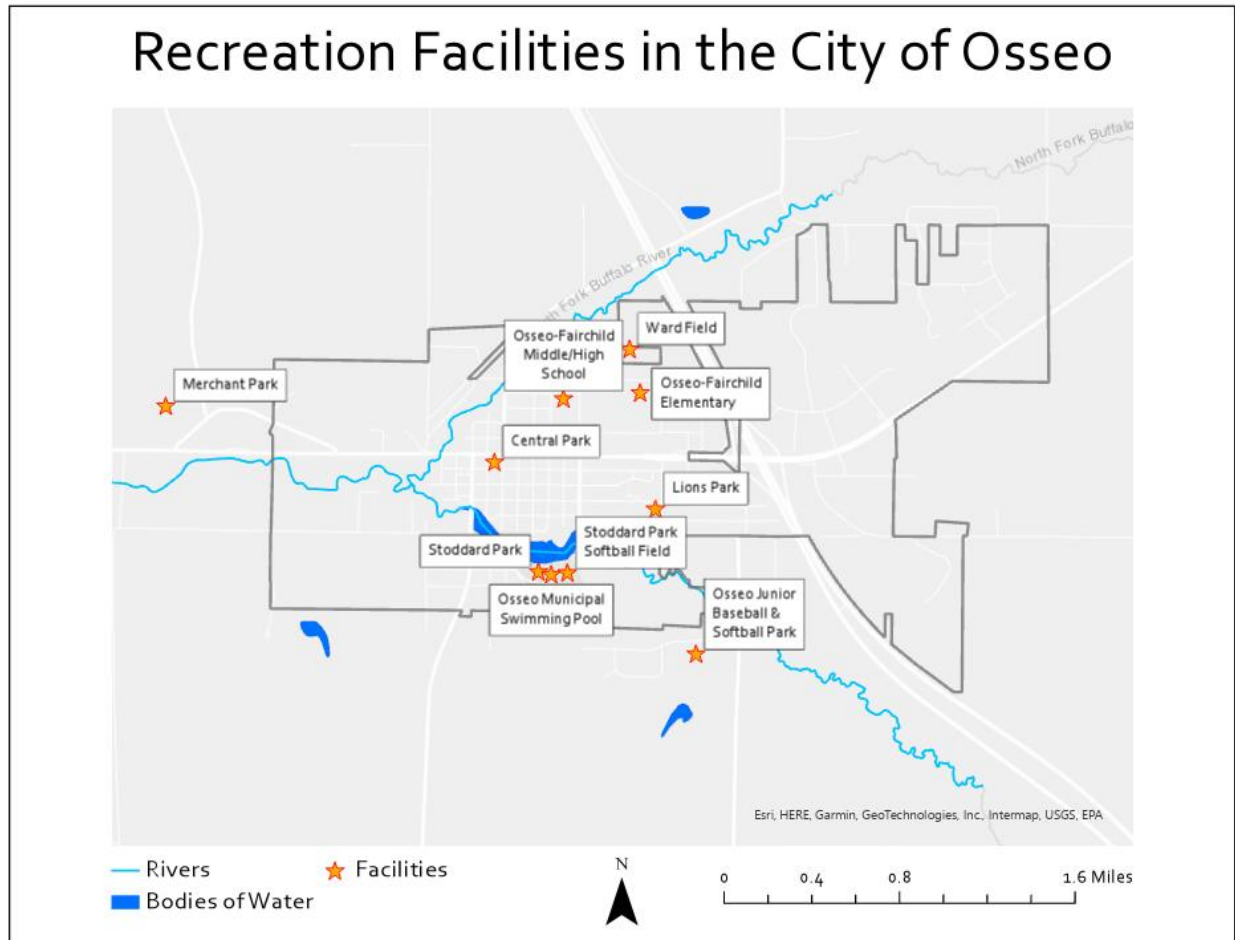
* Universe: Population 25 years and over





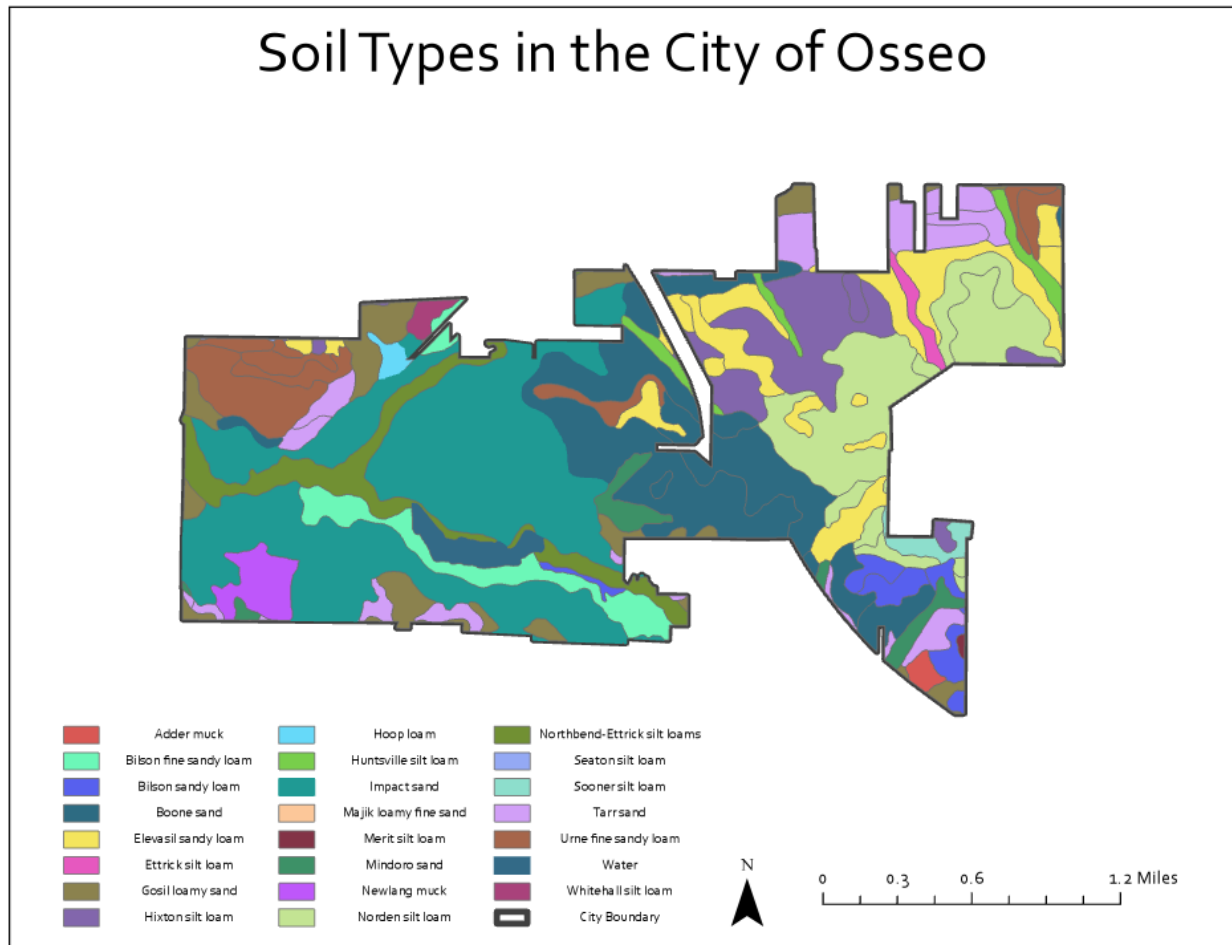
Appendix C: Maps

Recreation Facilities





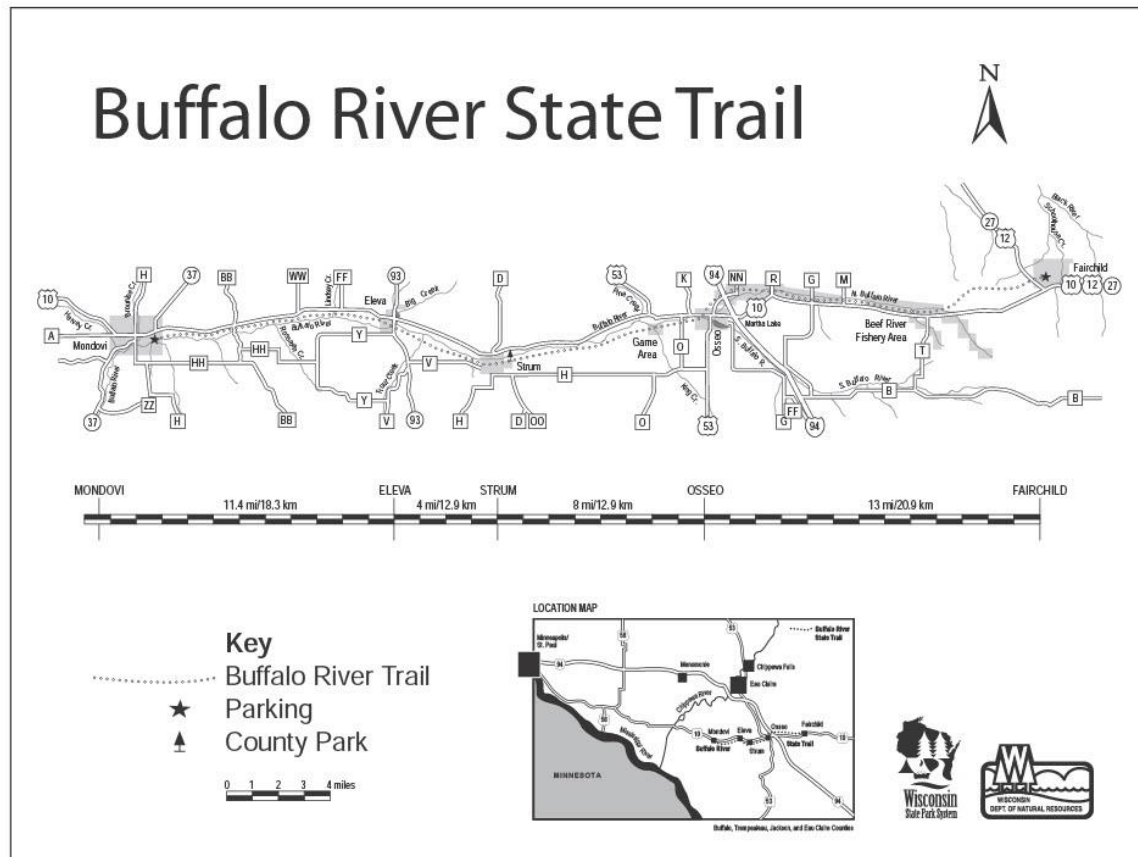
Soil Types



Source: USDA Web Soil Survey

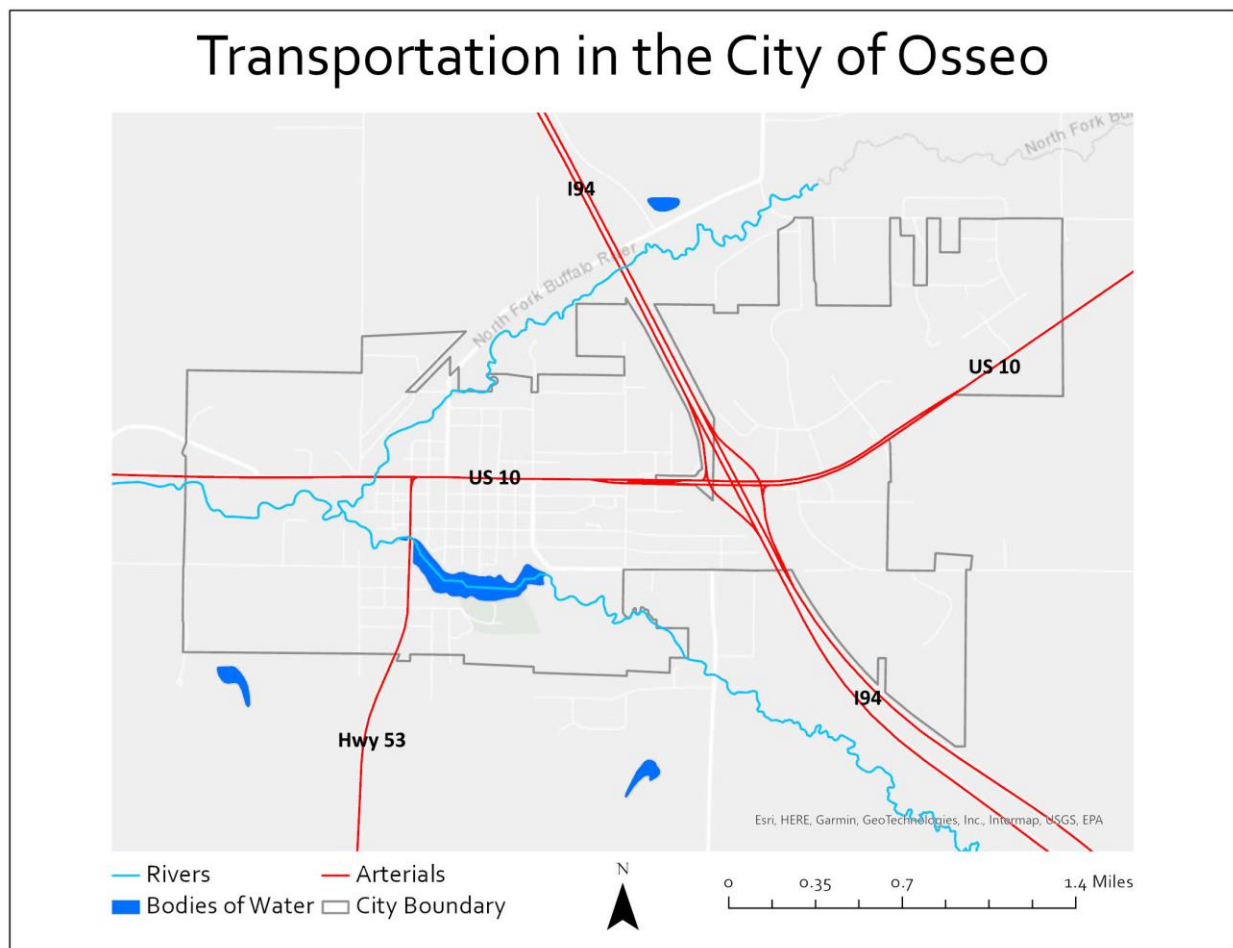


Buffalo River State Trail



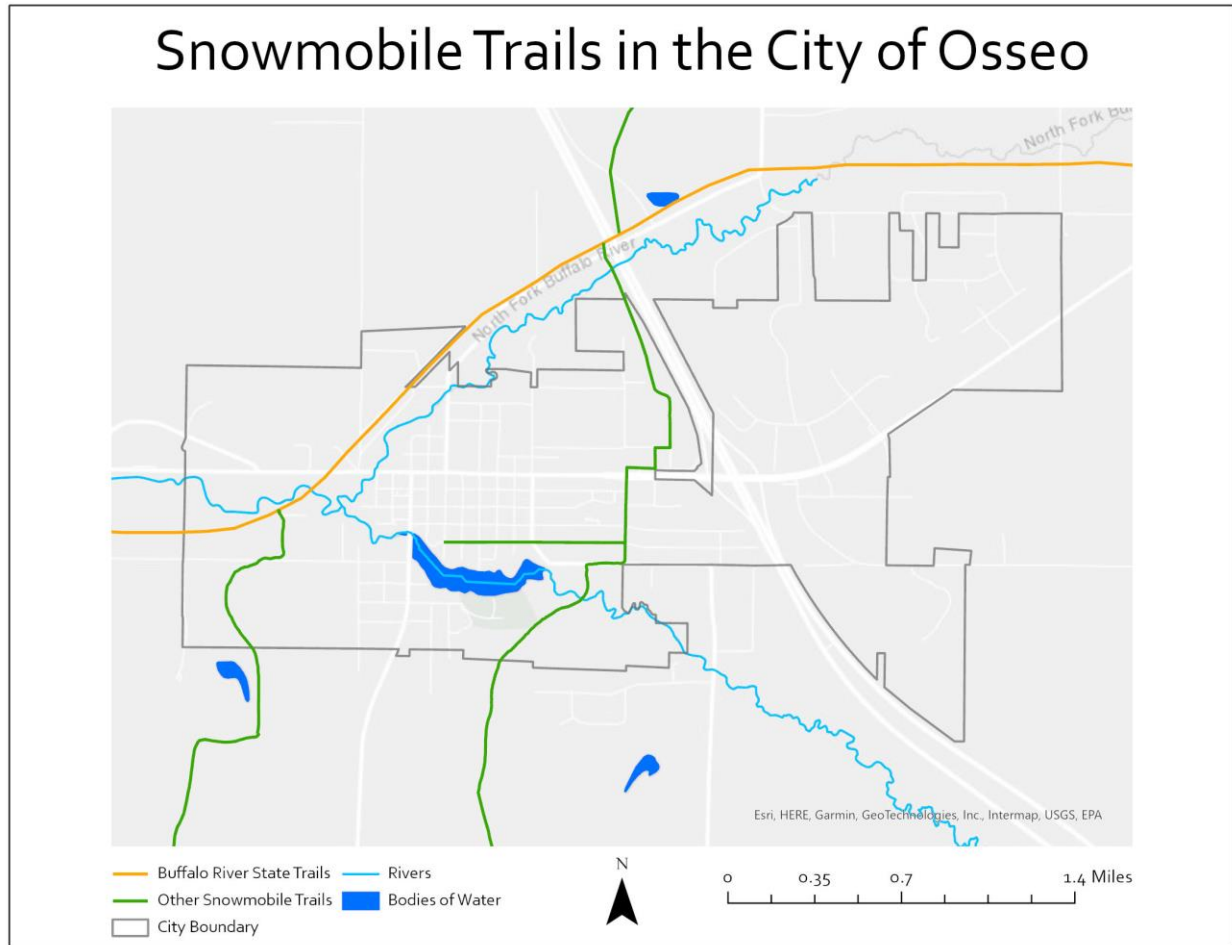


Arterials in Osseo



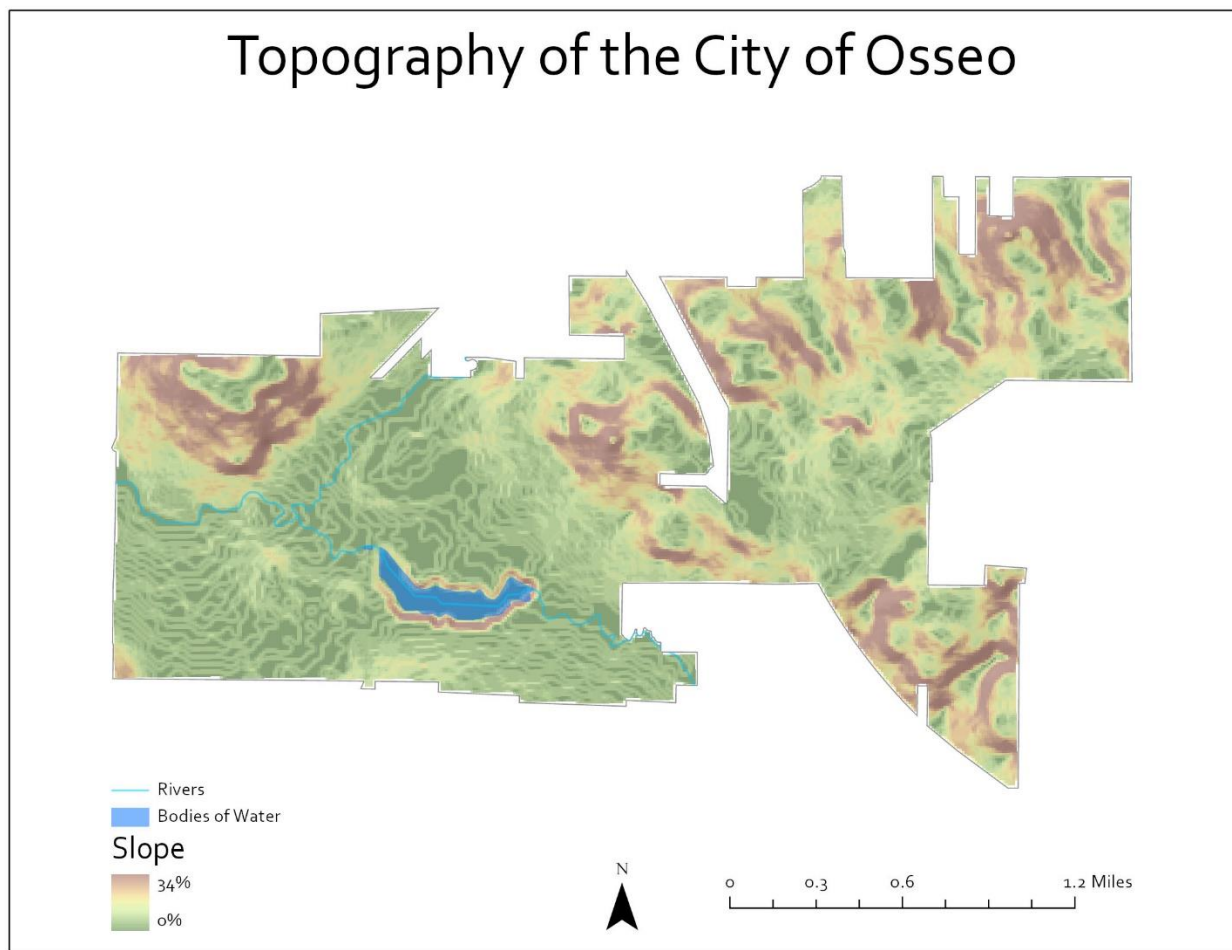


Snowmobile Trails in Osseo





Topography of Osseo





Appendix D: Survey Results





Appendix E: Adoption Resolution

City of Osseo, Trempealeau County, Wisconsin

Resolution No. 24-__-__

RESOLUTION TO ADOPT THE CITY OF OSSEO OUTDOOR RECREATION PLAN, 2024-2029 AS THE OFFICIAL COMPREHENSIVE OUTDOOR RECREATION PLAN

FOR THE CITY OF OSSEO, WISCONSIN

WHEREAS, The City of Osseo Wisconsin, through the citizens of Osseo and an ad hoc plan update steering committee representing various stakeholder groups, in cooperation with Mississippi River Regional Planning Commission, has developed and updated a comprehensive outdoor recreation plan for the City; and,

WHEREAS, the City of Osseo participated in the plan update; and,

WHEREAS, the plan lists available outdoor recreation facilities and identifies foreseeable outdoor recreation demand for the City of Osseo; and,

WHEREAS, the plan identifies specific recommendations and priorities for improving the recreational facilities and opportunities within the City of Osseo; and,

WHEREAS, municipalities are required to have a community outdoor recreation plan on file with the Wisconsin Department of Natural Resources in order to be eligible for certain State and Federal cost-sharing financial aids for the development or improvement of outdoor recreation facilities;

NOW, THEREFORE, BE IT RESOLVED, that the City of Osseo City Council hereby adopts the City of Osseo Outdoor Recreation Plan, 2024-2029, as the official comprehensive outdoor recreation plan for the City of Osseo.

Dated this ____ day of _____ 2024.

Mayor

Attest - Clerk